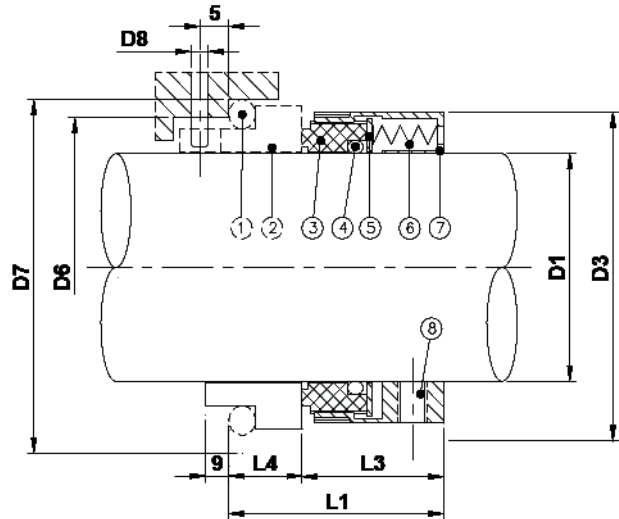


# TYPE NES-11U



- 1 O-Ring
- 2 Stationary Face
- 3 Rotary Face
- 4 O-Ring
- 5 Disc
- 6 Spring
- 7 Retainer
- 8 Drive Screw

## Features:

Short working length, can suits all DIN standard pumps. Wave springs are available on request.

## Operating Conditions:

Pressure: Up to 10kg/cm<sup>2</sup> (140 PSI)  
 Temperature: -20°C ~230°C  
 Speed: Up to 25m/s

## Materials:

Rotary Face: Carbon, SiC, SSiC, TC.  
 Stationary Face: SiC, SSiC, TC.  
 Elastomer: NBR, EPDM, Viton®.  
 Spring: 304SS, 316SS, Has C  
 All Metal Parts: 304SS, 316SS.

All trademarks are the property of their respective owners.

## Seat Compatibility:

Standard: M  
 Alternative: N, D, W.

D1	D3	D6	D7	D8	L1	L3	L4
18	32	27	33	3	31	21	10
20	34	29	35	3	31	21	10
22	36	31	37	3	31	21	10
24	38	33	39	3	34	24	10
25	39	34	40	3	34	24	10
28	42	37	43	3	34	24	10
30	44	39	45	3	35	25	10
32	46	42	48	3	35	25	10
33	47	42	48	3	35	25	10
35	49	44	50	3	35	25	10
38	54	49	56	4	39	28	11
40	56	51	58	4	39	28	11
43	59	54	61	4	39	28	11
45	61	56	63	4	39	28	11
48	64	59	66	4	39	28	11
50	66	62	70	4	41	28	13
53	69	65	73	4	41	28	13
55	71	67	75	4	41	28	13
58	78	70	78	4	42	29	13
60	80	72	80	4	42	29	13
63	83	75	83	4	45	32	13
65	85	77	85	4	45	32	13
68	88	81	90	4	48	32.7	15.3
70	90	83	92	4	48	32.7	15.3
75	99	88	97	4	52	36.7	15.3
80	104	95	105	4	52	36.3	15.7
85	109	100	110	4	52	36.3	15.7
90	114	105	115	4	55	36.3	15.7
95	119	110	120	4	55	36.3	15.7
100	124	115	125	4	55	36.3	15.7