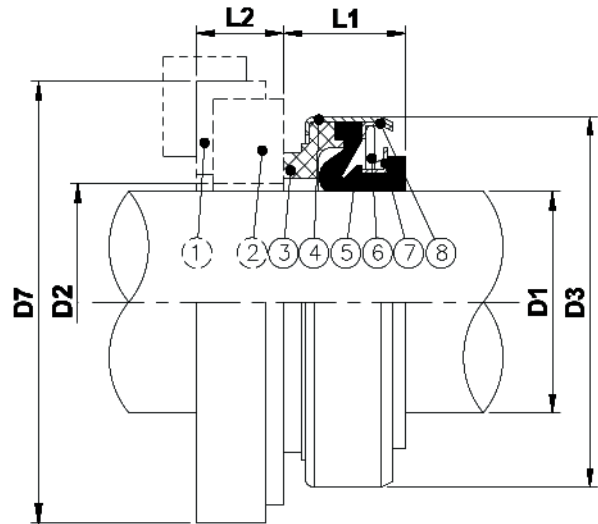
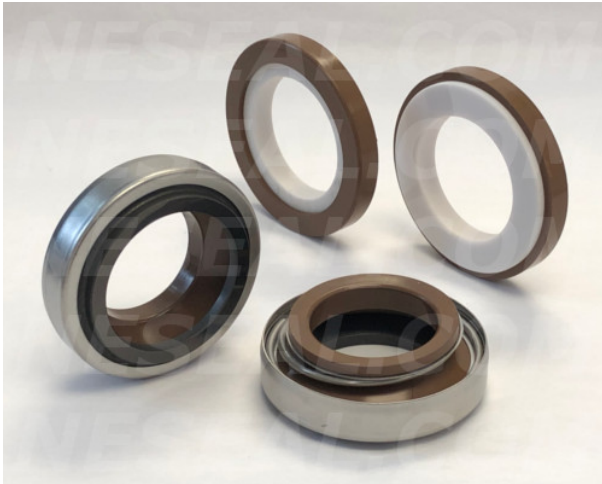


TYPE NES 18

Equivalent to Vulcan 18



- 1 Cup Rubber
- 2 Stationary Face
- 3 Rotary Face
- 4 Retainer
- 5 Elastomer Bellow
- 6 Spring
- 7 Diver Band
- 8 Spring Holder

Features:

Single spring seal.

Operating Conditions:

Pressure: Up to 6.3kg/cm² (90 PSI)
 Temperature: -20°C ~160°C
 Speed: Up to 10m/s

Materials:

Rotary Face: Carbon, SiC, SSiC, TC.
 Stationary Face: Ceramic, SiC, SSiC, TC.
 Elastomer: NBR, EPDM, Viton®.
 Spring: 304SS, 316SS
 All Metal Parts: 304SS, 316SS.

All trademarks are the property of their respective owners.

D1	D2	D3	D7	L1	L2
6	7.0	18.0	22.0	8.5	4.0
7	8.5	18.0	22.0	11.0	4.0
8	11.0	24.0	26.0	11.0	8.0
10A	11.0	24.0	26.0	11.0	8.0
10B	13.0	24.0	26.0	11.0	5.5
11	13.0	24.0	26.0	11.0	8.0
12A	13.0	24.0	26.0	13.0	8.0
12B	17.0	32.0	35.0	13.0	8.0
13	14.0	24.0	26.0	13.0	8.0
14A	17.0	32.0	35.0	13.0	8.0
14B	17.0	35.0	38.0	13.0	8.0
15A	17.0	32.0	29.5	13.0	8.0
15B	17.0	35.0	38.0	13.0	8.0
16A	18.0	32.0	38.0	13.0	8.0
16B	18.0	39.0	42.0	13.0	8.0
17	18.0	39.0	42.0	13.0	8.0
18	21.0	39.0	42.0	13.0	8.0
19	21.0	39.0	42.0	13.0	8.0
20A	21.0	39.0	42.0	13.0	8.0
20B	26.0	42.0	45.0	13.0	10.0
22	26.0	42.0	45.0	13.0	10.0
24	27.0	47.0	50.0	14.0	10.0
25	27.0	47.0	50.0	14.0	10.0
28	27.0	54.0	57.0	15.0	10.0
30	33.0	54.0	57.0	15.0	10.0
32	33.0	54.0	57.0	15.0	10.0
35	38.0	60.0	63.0	16.0	10.0
38	42.0	65.0	68.0	18.0	12.0
40	42.0	65.0	68.0	18.0	12.0
45	47.0	70.0	73.0	20.0	12.0
50	52.0	85.0	88.0	23.0	15.0
55	60.0	85.0	88.0	23.0	15.0
60	67.0	105.0	110.0	30.0	15.0
65	67.0	105.0	110.0	30.0	15.0
70	72.0	105.0	110.0	32.0	15.0