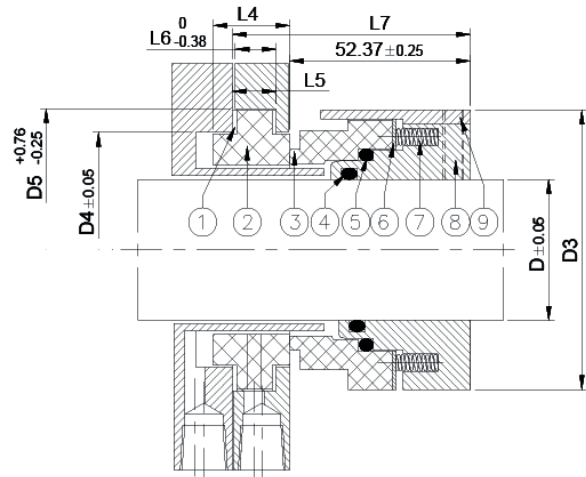


TYPE NES-28

Equivalent to John Crane 32



- 1 Gasket
- 2 Stationary Face
- 3 Rotary Face
- 4 O-Ring
- 5 O-Ring
- 6 Washer
- 7 Spring
- 8 Retainer

Features:

Outside mounted seal designed. Specifically for top- entry agitator and mixer. Stationary sanitary glands are available on request.

Operating Condition

Pressure: Up to 15kg/cm² (215 PSI)
 Temperature: -20°C ~200°C
 Speed: Up to 2m/s

Material:

Face: Carbon, SiC, TC.
 Seat: Ceramic, SiC, TC.
 O-Ring: NBR, EPDM, Viton®.
 Metal: 304SS, 316SS

All trademarks are the property of their respective owners.

Seat Compatibility

Standard: A6.
 Alternative: A7, A4, W.

D	D3	D4	D5	L4	L5	L6	L7
25	63.5	47.6	57.9	20.6	12.7	11.9	69.0
28	66.6	50.8	61.1	20.6	12.7	11.9	69.0
30	69.8	53.9	67.5	22.2	12.7	11.9	69.9
32	69.8	53.9	67.5	22.2	12.7	11.9	69.9
33	73.0	57.1	70.6	22.2	12.7	11.9	69.9
35	73.0	57.1	70.6	22.2	12.7	11.9	69.9
38	76.2	63.5	77.0	22.2	12.7	11.9	69.9
40	79.3	66.6	80.2	22.2	12.7	11.9	69.9
43	82.5	69.8	83.3	22.2	12.7	11.9	69.9
45	85.7	73.0	89.7	25.4	15.9	15.1	73.0
50	88.9	79.3	96.0	25.4	15.9	15.1	73.0
53	92.0	82.5	99.2	25.4	15.9	15.1	73.0
55	95.2	85.7	102.4	25.4	15.9	15.1	73.0
58	98.4	88.9	105.6	25.4	15.9	15.1	73.0
60	98.4	88.9	105.6	25.4	15.9	15.1	73.0
63	101.6	92.0	108.7	25.4	15.9	15.1	73.0
65	104.7	95.2	111.9	25.4	15.9	15.1	73.0
68	107.9	98.4	115.1	25.4	15.9	15.1	73.0
70	107.9	98.4	115.1	25.4	15.9	15.1	73.0
75	114.3	103.3	119.8	25.4	15.9	15.1	73.0
80	120.6	111.1	127.8	25.4	15.9	15.1	73.0
85	123.8	114.3	131.0	25.4	15.9	15.1	73.0
90	130.2	120.7	137.3	25.4	15.9	15.1	73.0
95	133.3	123.8	140.5	25.4	15.9	15.1	73.0
100	139.7	133.3	150.0	25.4	15.9	15.1	73.0
105	142.9	136.5	153.2	25.4	15.9	15.1	73.0
110	149.2	142.8	159.5	25.4	15.9	15.1	73.0
115	155.5	149.2	165.9	25.4	15.9	15.1	73.0
120	158.7	152.4	169.1	25.4	15.9	15.1	73.0
125	165.1	158.7	175.4	25.4	15.9	15.1	73.0
130	168.2	168.2	184.9	25.4	15.9	15.1	73.0
135	174.6	174.6	191.3	25.4	15.9	15.1	73.0
140	180.9	180.9	197.6	25.4	15.9	15.1	73.0
145	184.1	184.1	200.8	25.4	15.9	15.1	73
150	190.5	190.5	207.2	25.4	15.9	15.1	73
155	193.6	193.6	210.3	25.4	15.9	15.1	73
160	200.0	200.0	216.7	25.4	15.9	15.1	73
165	203.2	203.2	219.9	25.4	15.9	15.1	73
170	209.5	209.5	226.2	25.4	15.9	15.1	73
175	215.9	215.9	232.6	25.4	15.9	15.1	73