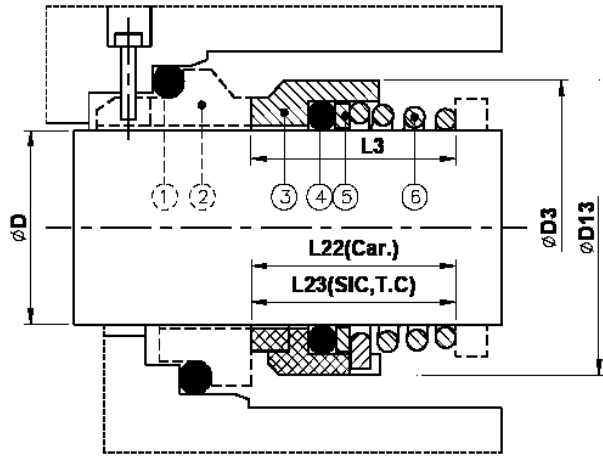


TYPE NES-3U

Equivalent to Burgmann M3N



- | | |
|-------------------|----------|
| 1 O-Ring | 4 O-Ring |
| 2 Stationary Face | 5 Disc |
| 3 Rotary Face | 6 Spring |

Features:

A simple, reliable single spring seal. Widely used in water pumps, sewage pumps, submerged pumps and chemical pumps and no abrasion against shaft.

Operating Conditions:

Pressure: 10kg/cm² (140 PSI)
 Temperature: -20°C ~200 °C
 Speed: 10m/s

Material:

Rotary Face: Carbon, SiC, SSiC, TC.
 Stationary Face: Carbon, SS, SiC, SSiC, TC
 Elastomer: NBR, EPDM, Viton®, FEP.
 Spring: 304SS, 316SS
 Metal Parts: 304SS, 316SS

All trademarks are the property of their respective owners.

Seat Compatibility:

Standard: A
 Alternatives: B, H, I.

D	D3	D13	L3	L22	L23
10	19	20	15.5	16.9	--
12	21	22	16.0	17.4	--
14	23	24	16.5	17.4	16.5
15	24	25	--	17.4	16.5
16	26	26	18.0	19.5	16.5
18	29	31	19.5	20.5	18.0
20	31	34	22.0	22.0	19.0
22	33	36	21.5	23.5	20.5
24	35	38	23.5	25.0	22.0
25	36	39	26.5	26.5	23.5
28	40	42	26.5	26.5	24.5
30	43	44	26.5	25.0	24.5
32	46	46	28.5	28.5	28.0
33	47	47	28.5	28.5	28.0
35	49	49	28.5	28.5	28.0
38	53	54	33.5	32.2	31.0
40	56	56	36.0	34.7	34.0
42	59	58	--	37.3	35.0
43	59	59	38.5	37.3	35.0
45	61	61	39.5	39.2	36.5
48	64	64	46.0	44.7	42.0
50	66	66	45.0	45.7	43.0
53	69	69	47.0	--	--
55	71	71	49.0	49.0	47.0
58	76	78	55.0	52.0	50.0
60	78	79	55.0	55.0	51.0
63	83	83	55.0	--	--
65	84	85	55.0	54.3	52.0
68	88	88	55.0	55.3	52.7
70	90	90	57.0	56.3	54.0
75	98	98	62.0	56.3	54.0
80	100	103	61.8	59.3	58.0